

ATELERIX

SAVIOUR OF CELLS



No, we are not a courier...!

THE FUTURE OF BIOSAMPLE LOGISTICS

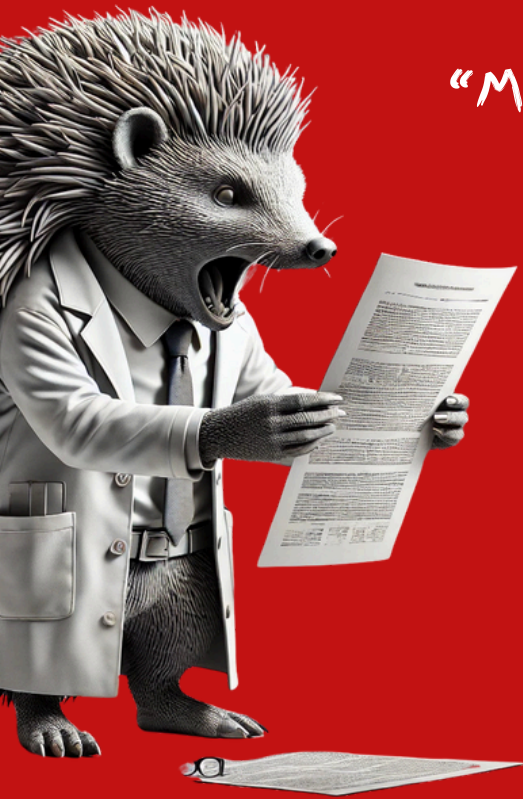


*“We're here to turn the cryologistics world on its head,
becoming every laboratory's favourite shipping
companion across the globe.”*

*“Redefining how labs operate, trimming costs,
& giving a jolly good boost to
reducing carbon emissions worldwide.”*



SOUND FAMILIAR?



"My results are skewed
by artefacts of
shipping...
again!"



CRYO

FRESH



"Cryologistics
is killing our
planet"



"Why is the tracker still
saying at customs!"

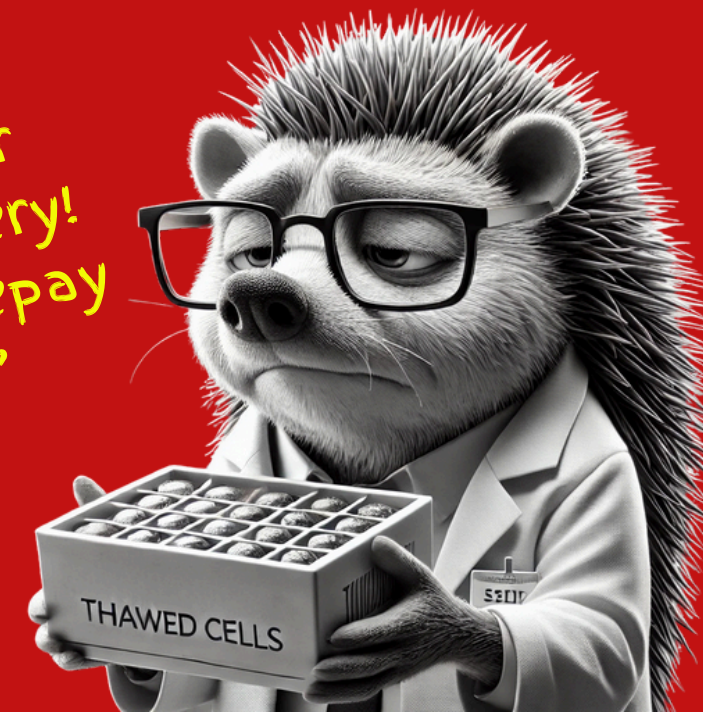


"Damned if I do, damned if I don't!"

"High stakes
shipments - gambling
with my project
success"



"Yet another
thawed delivery!
Great, let's repay
for that!"



"Juggling sample delivery
times with my experiments
is so stressful!"

CRYOLOGISTICS SIDE-EFFECTS...

SHIPMENT ANXIETY **FOR SCIENTISTS**
PROFIT WITHDRAWALS **FOR ORGANISATIONS**
FOMO ON CURES **FOR PATIENTS**

Not good

*Really, really,
not v.good!*

BUT...



“It doesn't have to be this way!”



CRYO-FREE, HASSLE-FREE, AMBIENT LOGISTICS

fresh sample shelf life *AMPLIFIED* from hours to *WEEKS*



“Enables complex tissue models, sensitive cells, & therapies to be shipped”

“We supply biosample preservation kits. All you need is a pipette”



“Sample viability & functional performance maintained”

**EASY TO VALIDATE
DE-ESCALATE SHIPPING
SLASH COSTS BY UP TO 10X!**



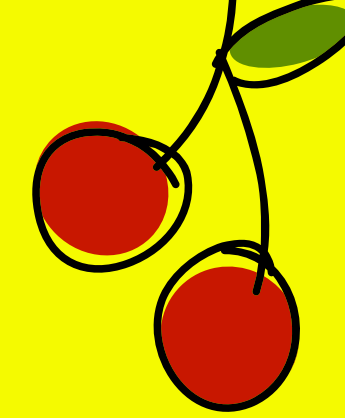
**FLEXIBLE, LOW-COST SUPPLY CHAIN & WORKFLOW
FROM SAMPLE COLLECTION TO FINAL APPLICATION**

Keep money for science,
not shipping companies!

& "THE CHERRY ON TOP"...

- **SEAWEED-DERIVED ALGINATES**
NATURAL, NON-TOXIC, AND RENEWABLE
- **SUSTAINABLE BIOBASED PACKAGING**
MADE FROM A RENEWABLE RESOURCE
- **PHARMACEUTICAL-GRADE & GMP-COMPLIANT**
PRECISION YOU CAN TRUST
- **99.7% LOWER CARBON EMISSIONS**
A GREENER WAY TO SHIP!

FRIENDLY ON THE PLANET & YOUR BUDGETS!



SOUNDS INTERESTING, BUT WHATS WITH ALL THE HEDGEHOGS?



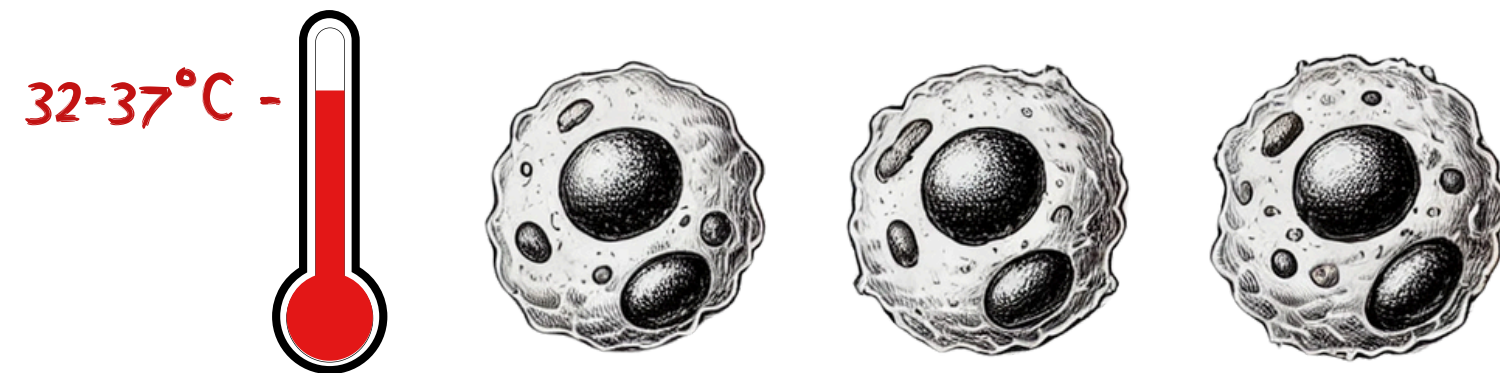
Thinking about what our technology does, we took inspiration from the practices of hedgehogs
(Genus name: *Atelerix*).

Specifically, the African four-toed pygmy hedgehog that
hibernates when the temperature drops
below 20°C.

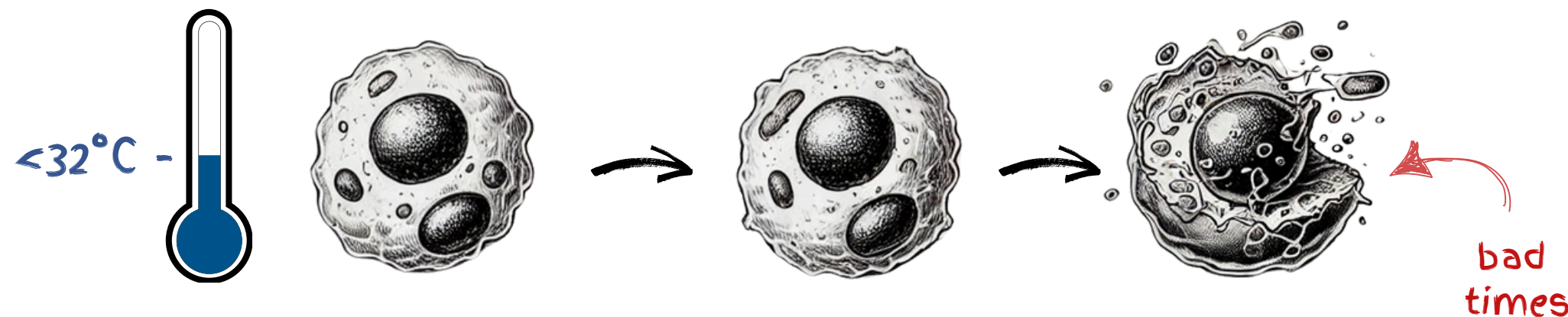
Since *our products allow cells to do this* too, we thought that
was a cool name for the company & *Atelerix* was born!



THE MAGIC of hypothermic preservation



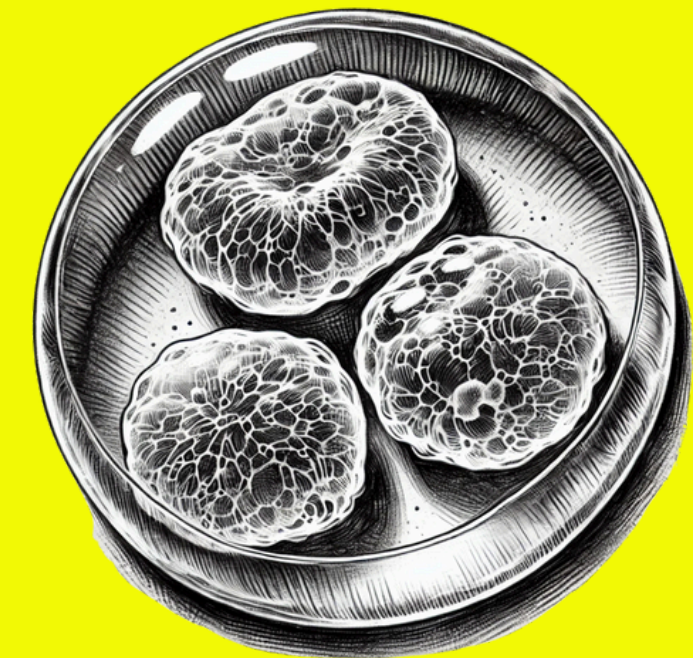
At 37°C (body temperature)
cells are metabolically active with a fluid membrane



As temperature decreases (hypothermia)
cells enter a state of hibernation but
are susceptible to membrane damage & subsequent death

Our gels stabilise cell membrane integrity
allowing samples to be held at room or
refrigerated temperatures for extended periods

Works on anything with
a lipid membrane!



Fresh cells, cell models, tissues & viruses
can be stored for up to 2 weeks
without the need to freeze



"Wow, now that's cool!"

& THE PROCESS...

...IS SIMPLE TOO!

kit format, all you need is a pipette and ~1 minute hands on time!

1.
Order &
receive your kit(s)



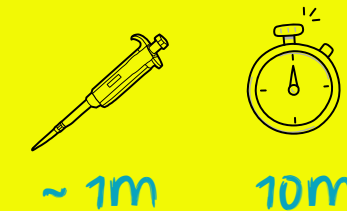
2.
Add your sample to
gelation beads



3.
Seal, allow to
gel & ship



4.
Add release buffer
& wash



5.
Run your assay &
rejoice in quality data!



Our best results ever!
Atelerix kit tests, 2025

THATS NOT ALL...

...WE COVER ALL BIOSAMPLE TYPES
same technology, range of kits optimised for your biosample type

The Blockbusters of biosample preservation



CYTOSTOR™

Cells & viruses



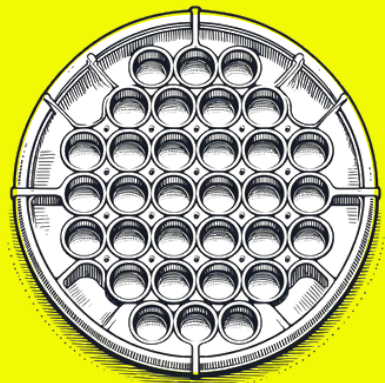
TISSUEREADY™

Tissues & organoids



BLOODREADY™

Whole blood



WELLREADY™

In-plate models



TISSUEREADY™

PLUS
Tissues



LEUKOSTOR™

Leukapheresis

“I’ve got to get ‘em all!”



VALIDATED IN OVER 70 BIOSAMPLE TYPES...

Very cool!

Delivering an ocular cell-based therapy clinical trial in India

[Learn more](#)

Enhancing cancer tissue collection & shipment for increased flexibility

[Learn more](#)

Maintaining MSC viability & therapeutic function perfect for cell therapies

[Learn more](#)

Amplifying the shelf life of leukapheresis starting material

[Learn more](#)

Transporting primary LSEC across the country for novel research

[Learn more](#)

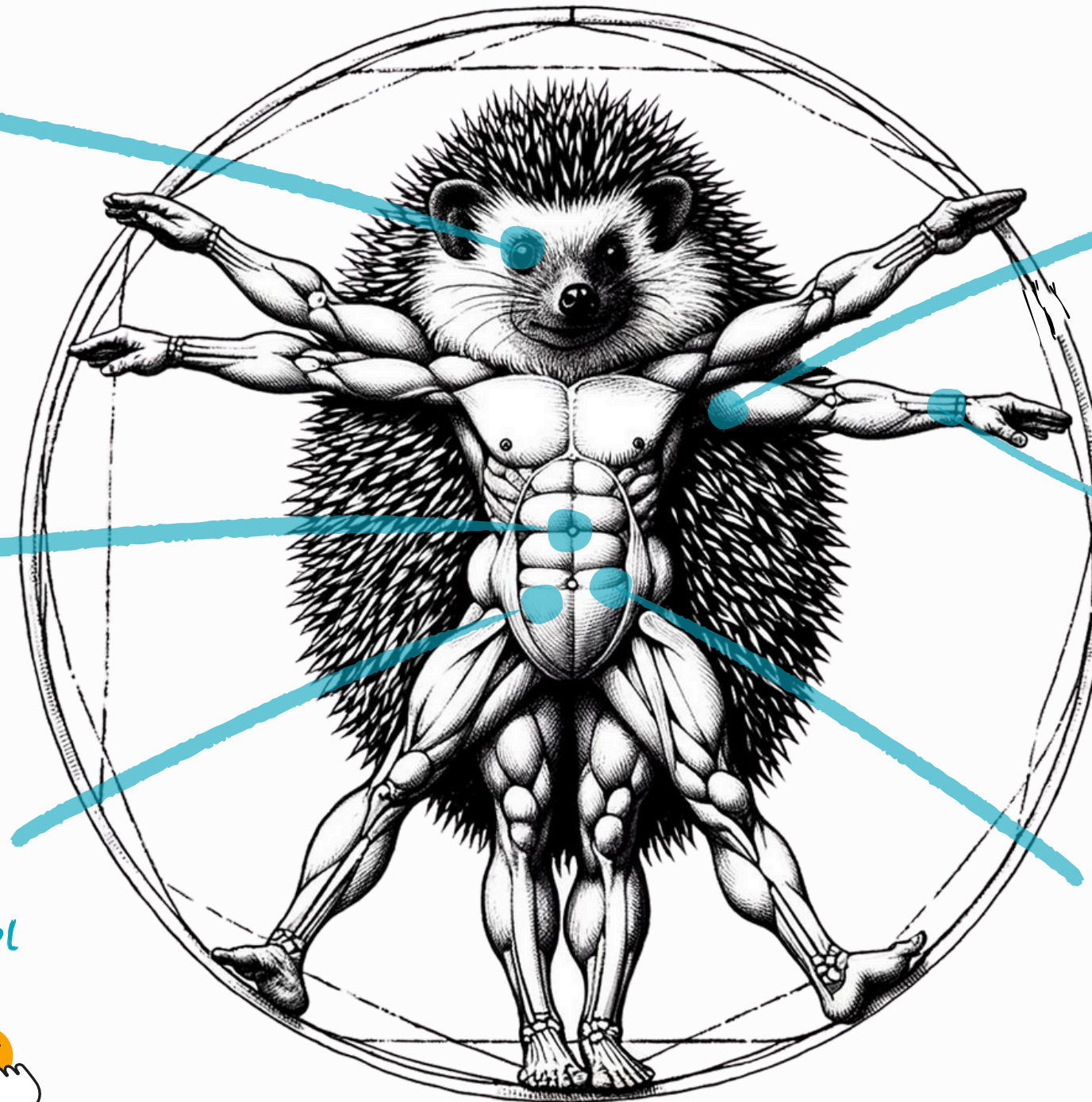
Shipment of 3d organoid models that couldn't be shipped before

[Learn more](#)

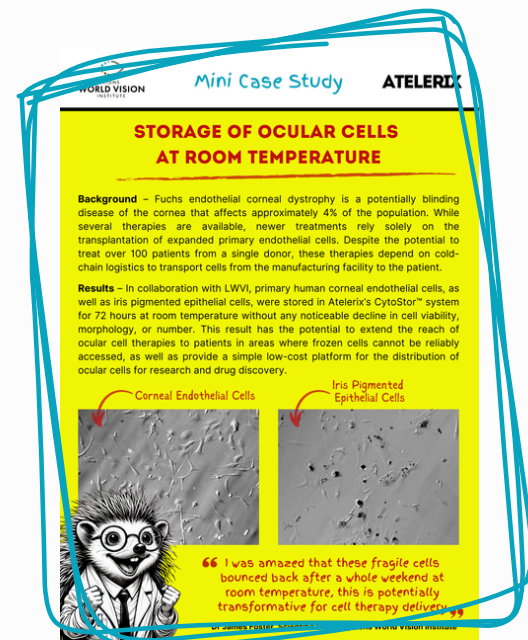
Room temperature cell storage combined with biofabrication, integrated for on-demand bioprinting

[Learn more](#)

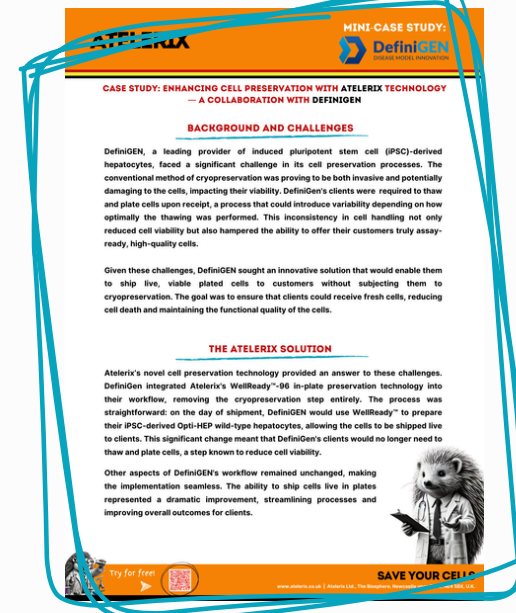
WE KNOW IT WORKS...



...AS DO OUR CUSTOMERS!



CytoStor™ preserves delicate ocular cells (corneal endothelial and iris pigmented epithelial) at room temperature for 72 hours—maintaining viability, morphology, and function for cost-effective cell therapy and research



DefiniGEN use WellReady™ tech to ship fresh iPSC-derived hepatocytes without cryopreservation—boosting viability, cutting logistical hassles, and streamlining functional assays.



WellReady™ tech safely ships delicate ImmuPHAGE™ cells at room temperature for up to 5 days, preserving their viability, morphology, and functionality.

“Atelerix’s gel preserved our valuable cells during an unintended 10-12 day transit from UK to India, far surpassing the expected viability in such harsh conditions.

This breakthrough slashed our shipping costs from ~\$2,500 to ~\$200. We are rolling Atelerix products out across all our biosample shipments.”

Sunil Shah, CEO, O2H Discovery

“This is pure witchcraft!”
Snr Scientist, Tier 1 pharma

“Check out our Library for a plethora of case studies & publications”

“I was pretty amazed that the tech worked in the first place!
I would definitely recommend Atelerix”

Ian M, Promega

click here



WHY HAVE YOU NOT HEARD OF US UNTIL NOW?

simple... we were terrible at marketing!



“no-one told us
we had to
actually talk to
people?!”

2012 - DISCOVERY & FIRST PATENT FILED

2017 - ATELERIX SPUN OUT OF NEWCASTLE UNIVERSITY, INTENSIVE R&D

2019 - £3M INVESTMENT: PRODUCT DEVELOPMENT, ASCERTAINING MARKET FIT

2024 - £1.25M INVESTMENT, 7 PRODUCT RANGES & FULLY SCALABLE MFG

2025 - ISO9001:2015 CERTIFIED

PRESENT DAY - “We're working with the world's largest CROs and biopharma companies to build a globally recognised brand and innovative solution.

Our cutting-edge approach is displacing cryologistics, becoming the preferred method for biosample shipping worldwide.

Whilst actively combating the life sciences carbon emissions crisis. We're definitely hogging the spotlight in sustainability.”



UK HQ
The Biosphere,
Newcastle

SO, WHAT ARE THE NEXT STEPS?

WELL, THE ONLY THING LEFT IS TO GIVE IT A TRY

we will support your product evaluation

1- EXPERT GUIDANCE FROM THE START

WE OFFER FREE CONSULTANCY TO DESIGN A VALIDATION WORK PLAN AND MAP OUT SEAMLESS COMPANY-WIDE ADOPTION.



these hogs must be serious!

2- EXPERIENCE IT FIRST-HAND

GET A FREE SAMPLE OR ENJOY 50% OFF YOUR FIRST ORDER TO SEE THE MAGIC IN ACTION.

3- REJOICE IN PRESERVATION EXCELLENCE

SAY GOODBYE TO ULTRA-COLD CHAIN HEADACHES AND HELLO TO RELIABLE, AMBIENT-TEMPERATURE STORAGE.

4- SEAMLESS SOP INTEGRATION

OUR TEAM SUPPORTS YOU IN EMBEDDING ATELERIX INTO YOUR SOPS FOR EFFORTLESS IMPLEMENTATION.

5- UNLOCK EXCLUSIVE SAVINGS

ATELERIX ACCOUNTS ACCESS DISCOUNTED PRICING FOR ONGOING USE.

WE KNOW IT WORKS, AS DO OUR CUSTOMERS, & SO WILL YOU



THE FUTURE OF BIOSAMPLE LOGISTICS cryologistics is dead.

ATELERIX

10X CHEAPER. KEEP MONEY FOR SCIENCE, NOT SHIPPING.

99.7% FEWER EMISSIONS. SAVE THE PLANET WHILE SAVING YOUR CELLS.

ZERO COMPROMISE. VIABILITY, FUNCTION, & INTEGRITY INTACT.

ANY SAMPLE, ANYWHERE. NO FREEZERS, NO DRY ICE, NO STRESS.

READY TO ROLL. SIMPLE, FAST & SEAMLESSLY INTEGRATES INTO SOPS.

Next steps?

GET A FREE SAMPLE. TRY IT. LOVE IT.

*“Viva la
Ambient Chain
Revolution!”*



PIQUED YOUR INTEREST?

WE'D LOVE TO CHAT!



**ALASTAIR,
CEO**



**STEVE,
CSO**

[book a meeting with us here](#)

Need more data?



SHOW ME THE DATA

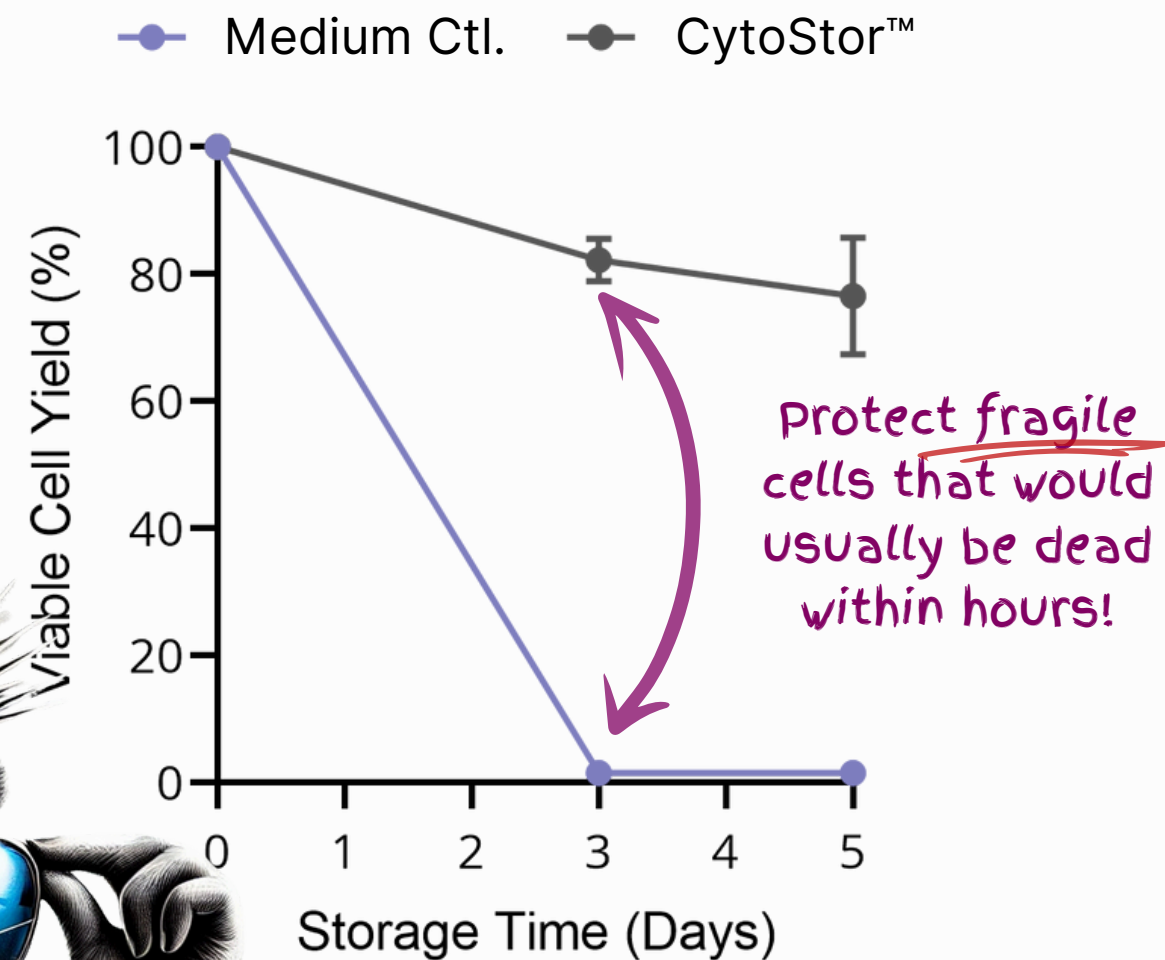


CYTOSTOR™

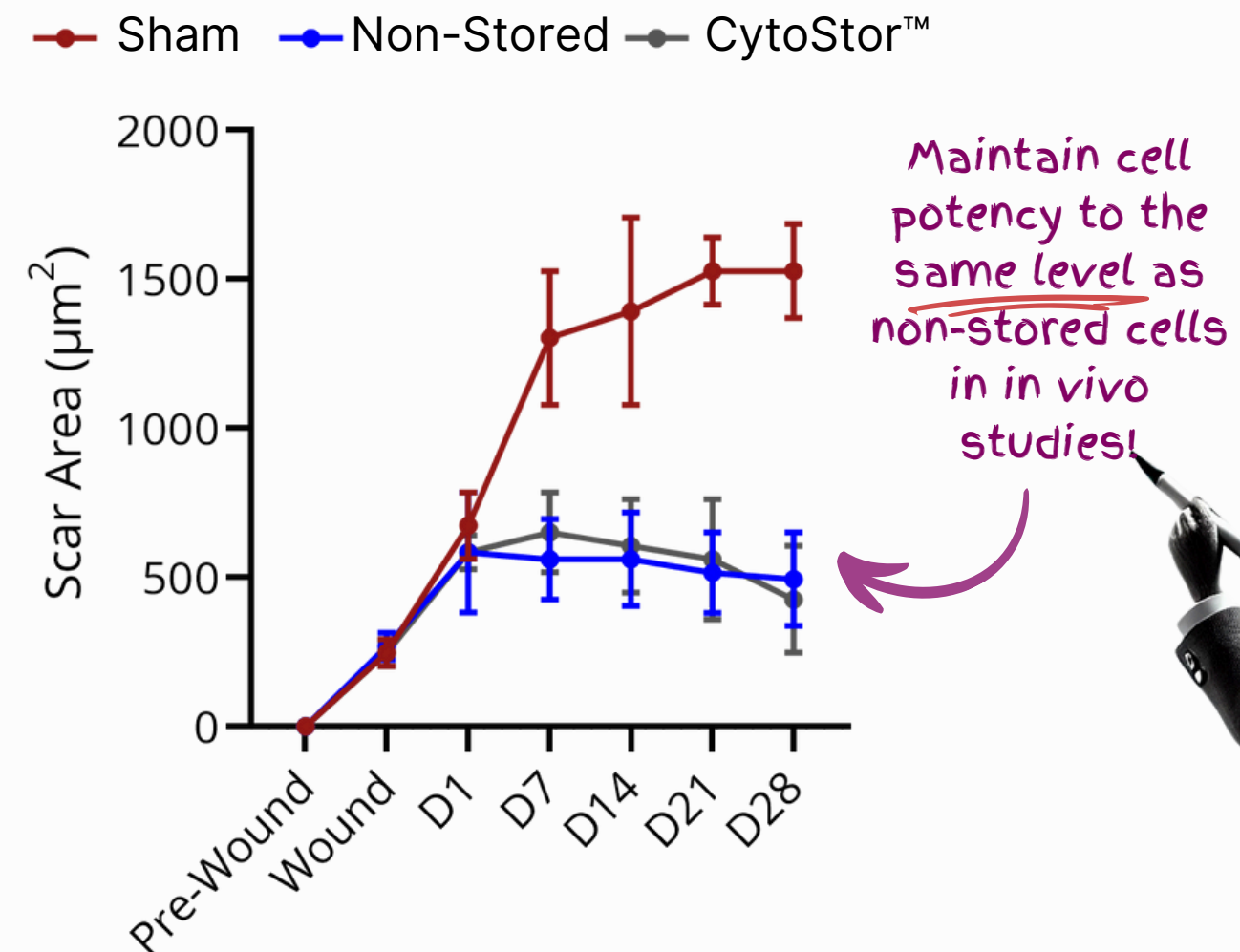
ship cells with ease without the need for cryopreservation

Also works on
viruses!

PRESERVE VIABILITY!



PRESERVE FUNCTION!



Data adapted from Damala, M. et al. Sci Rep 9, 16950 (2019) & Damala, M. et al. Cells, 12, 876 (2023): **Viable cell recovery of Corneal Limbal Stromal Cells preserved for 5 days in vitro & potency of cells preserved for 3-5 days in a corneal wound healing mouse model. Currently in clinical trial for treating corneal blindness**

*CytoStor™ was previously branded as BeadReady™



CYTOSTOR™

ship cells with ease without the need for cryopreservation

- TESTED SUCCESSFULLY WITH ~35 DIFFERENT CELL TYPES / ENVELOPED VIRUSES.

- PRESERVES VIABILITY, PHENOTYPE & FUNCTION FOR UP TO 2 WEEKS (DEPENDING ON CELL FRAGILITY).

5-7 days on average

- CELLS ARE EASILY ENCAPSULATED, SHIPPED AND RELEASED COST-EFFECTIVELY.

- 95% OF SAMPLES PERFORM BEST AT ROOM TEMPERATURE.

A few cell types prefer it in the fridge!

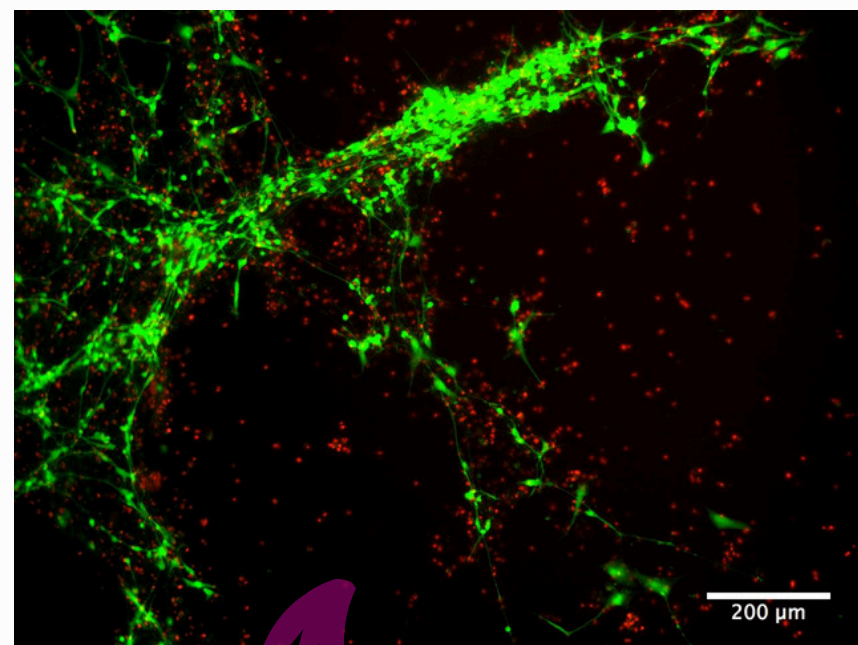


WELLREADY™

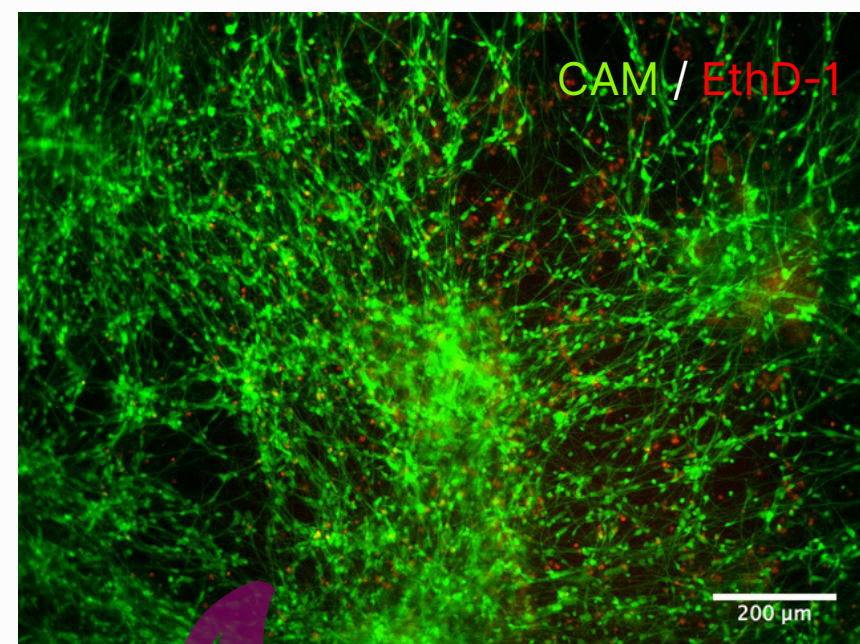
ship ready-to-use assays and complex models in plates

Designed for
cyto- and
mechanical
protection

MEDIUM CTL.



WELLREADY™



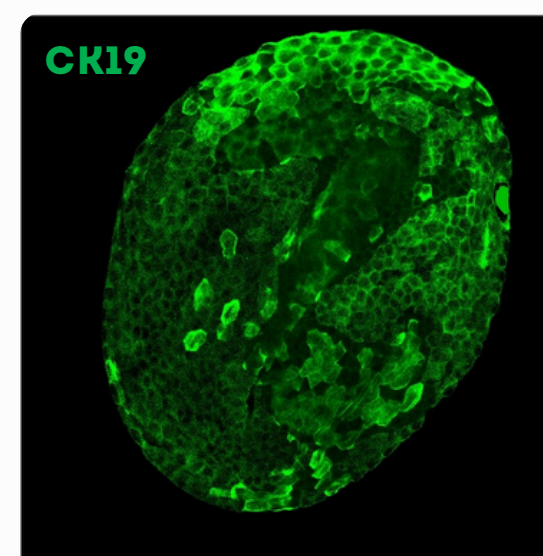
Complete devastation
of neural cultures
when shipped in liquid
medium

Maintained viability
& integrity of
complex neural
networks

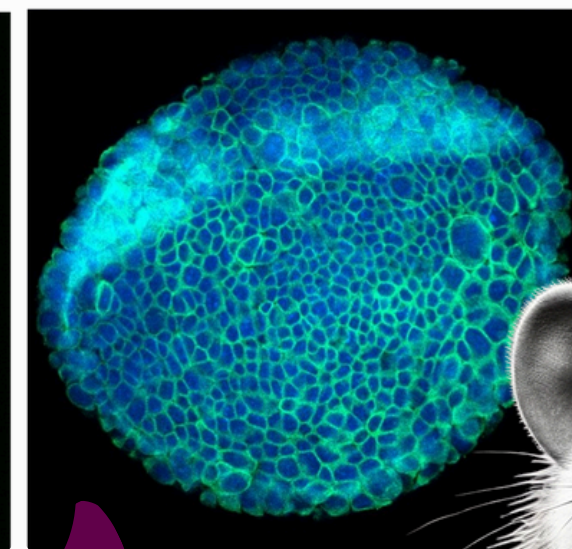
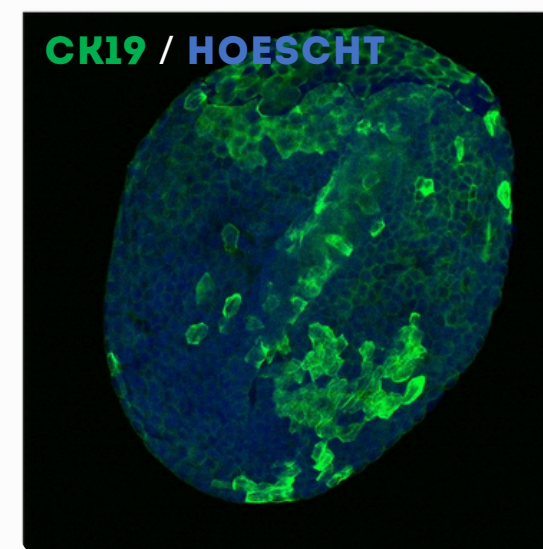
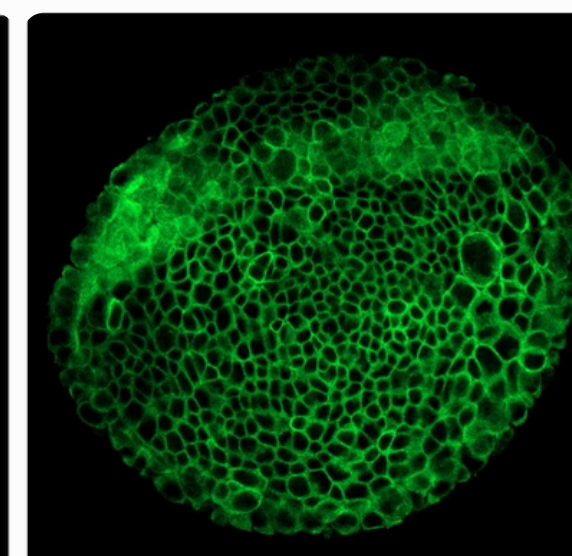
Figures obtained from Atelerix Datapack v0.12 showing fresh iPSC-derived cortical neurons stored & shipped for up to 7 days at room temperature, and iPSC-derived liver organoids stored for 5 days at room temperature.

<-- Don't be like this chap...

NON-STORED (DAY 0)



WELLREADY™



Multicellular liver
organoid structure
and function is
retained

...be more like this guy! -->

WELLREADY™

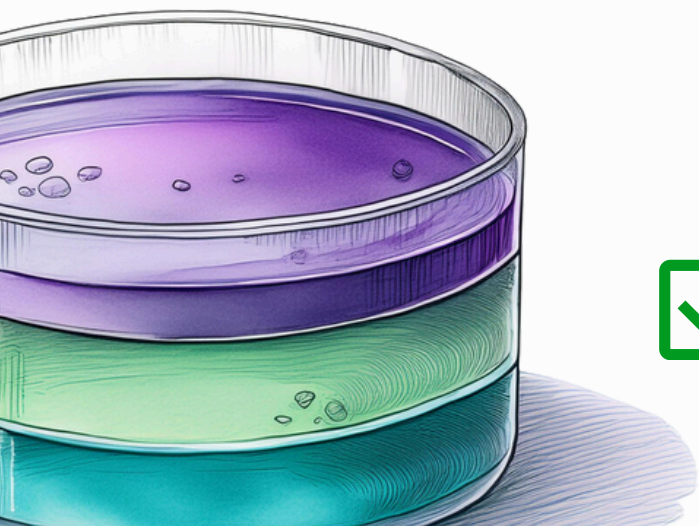
ship ready-to-use assays and complex models in plates

- CONTAINS 3 GEL LAYERS FOR OPTIMAL PROTECTION OF CELLS.
- WORKS ON MONOLAYERS, ENGINEERED MICROTISSUES, 3D-PRINTED MODELS, CULTURE-INSERT MODELS AND ORGANOIDS.
- PRESERVES VIABILITY, PHENOTYPE & FUNCTION FOR UP TO 2 WEEKS (DEPENDING ON CELL FRAGILITY).
- CELLS ARE EASILY ENCAPSULATED, SHIPPED AND RELEASED.
- 95% OF SAMPLES PERFORM BEST AT ROOM TEMPERATURE.

5-7 days on average

A few cell types prefer it in the fridge!

✓ tested across 25 different models

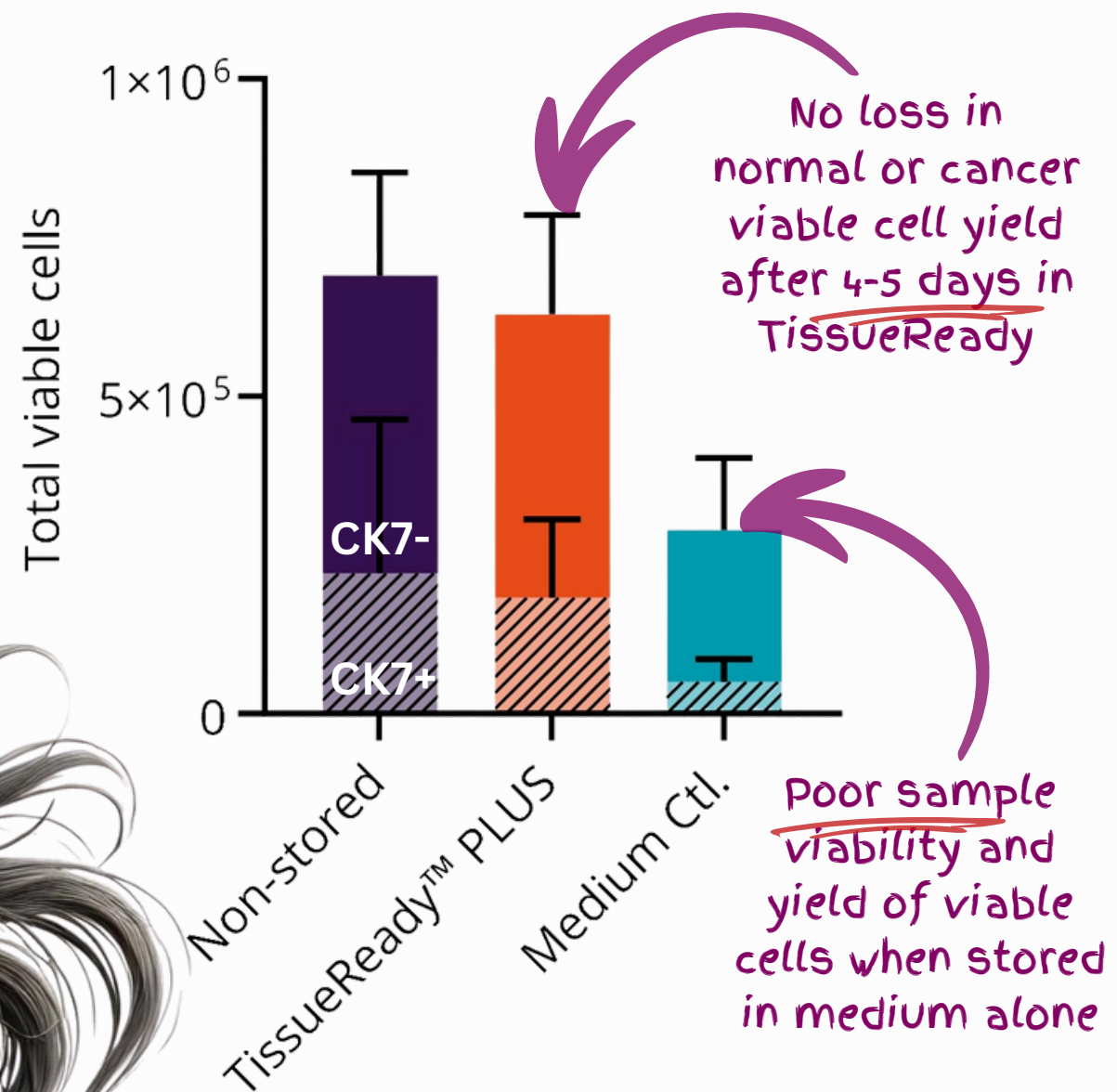


TISSUEREADY™ PLUS

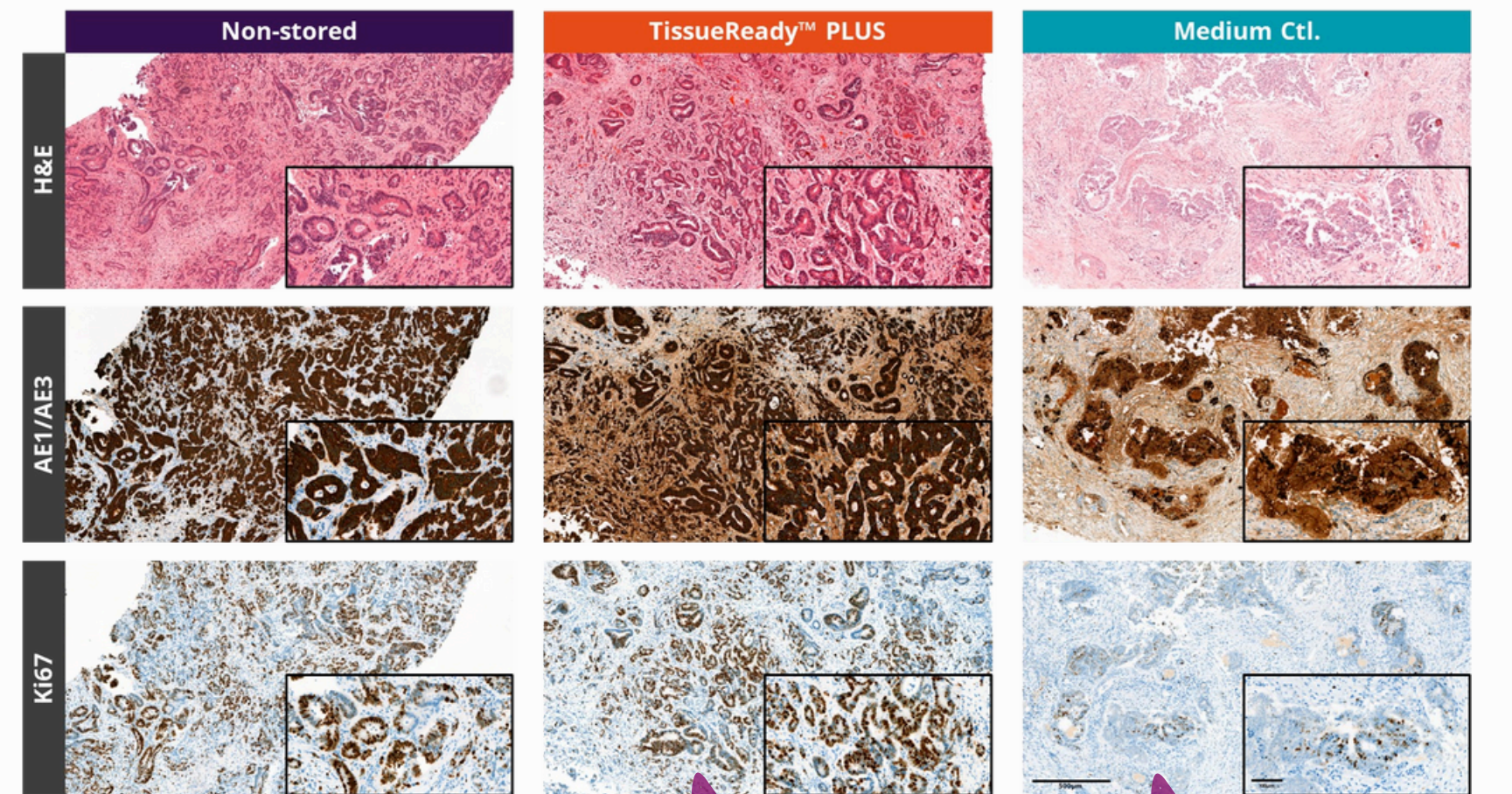
enhance the flexibility of fresh tissue acquisition & processing

Use standard
TissueReady™
for organoids!

PRESERVE VIABILITY!



PRESERVE INTEGRITY!



Tissue integrity & staining maintained when stored in TissueReady™ PLUS

Structural deterioration in medium alone

Figures obtained from TissueReady-PLUS White Paper showing fresh **oesophageal cancer tissue** stored and shipped for 4-5 days at room temperature before cell dissociation and fresh **liver cancer tissue** stored 2 days at room temperature before fixing and staining. Data collected by The Rare Cancer Group, University of Sheffield and NovoPath Biobank, NHS.

TISSUEREADY™ PLUS

enhance the flexibility of fresh tissue acquisition & processing

- **VALIDATED AGAINST MULTIPLE HEALTHY AND CANCER TISSUES.**

- **GET A 5-FOLD EXTENSION TO FRESH TISSUE SHELF LIFE.**

Use in 4-5 days rather
than within 24 hours

- **BUILD FLEXIBILITY INTO SUPPLY CHAINS & WORKFLOWS FROM COLLECTION TO PROCESSING.**

Samples no longer need
to be processed
immediately upon
arrival!

- **OPTIMISED FOR EASE OF COLLECTION (<1 MIN HANDS ON TIME)**

- **SAMPLES CAN BE USED FRESH OR FIXED/FROZEN FOR LONG-TERM STORAGE.**

Ship fresh and control
your processing SOPs
yourself for biobanking

"TissueReady-PLUS comes
preformulated with a
recommended medium.
With TissueReady™, you
can use your own!"

✓ tested across 20 different biosamples



BLOODREADY™

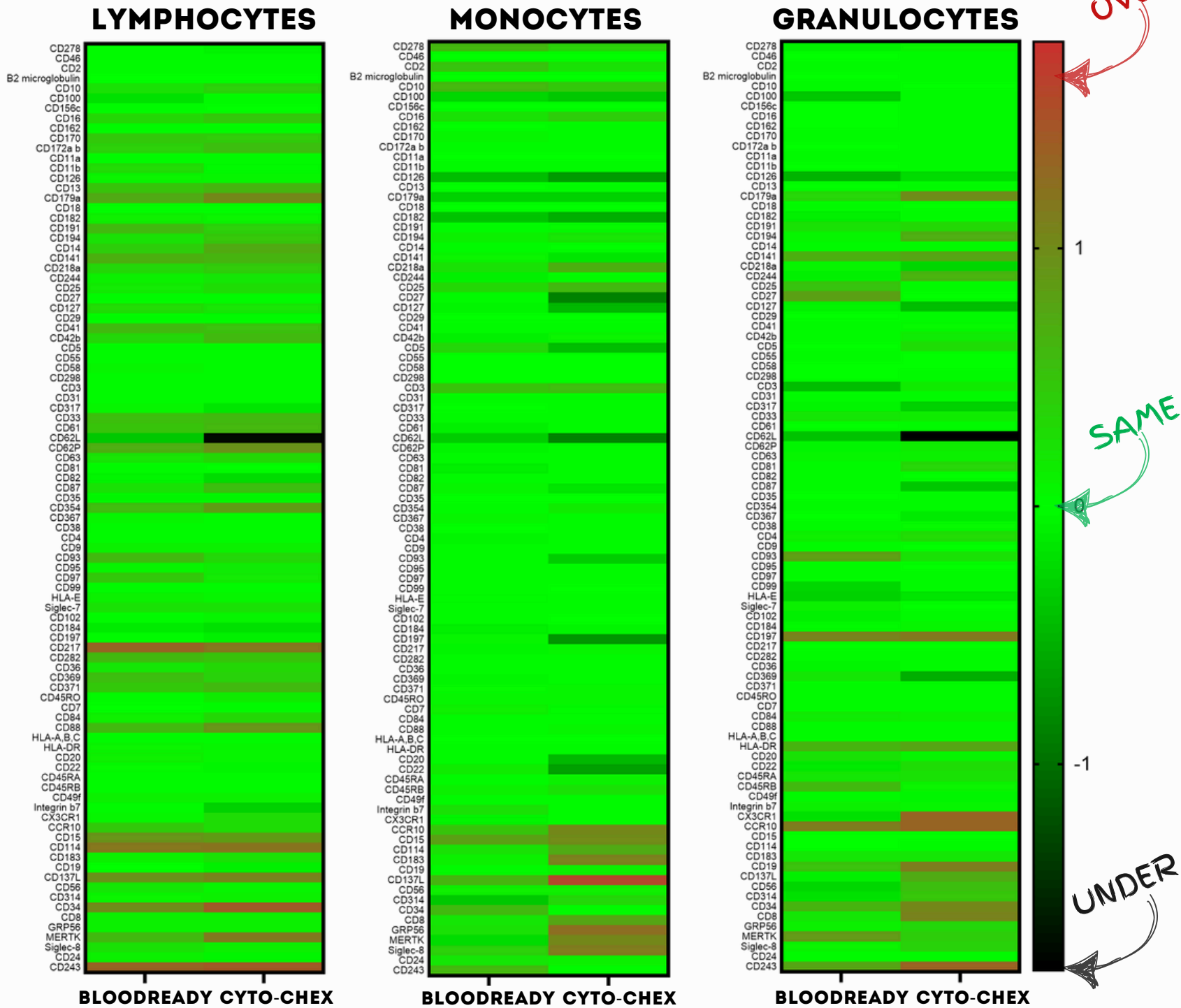
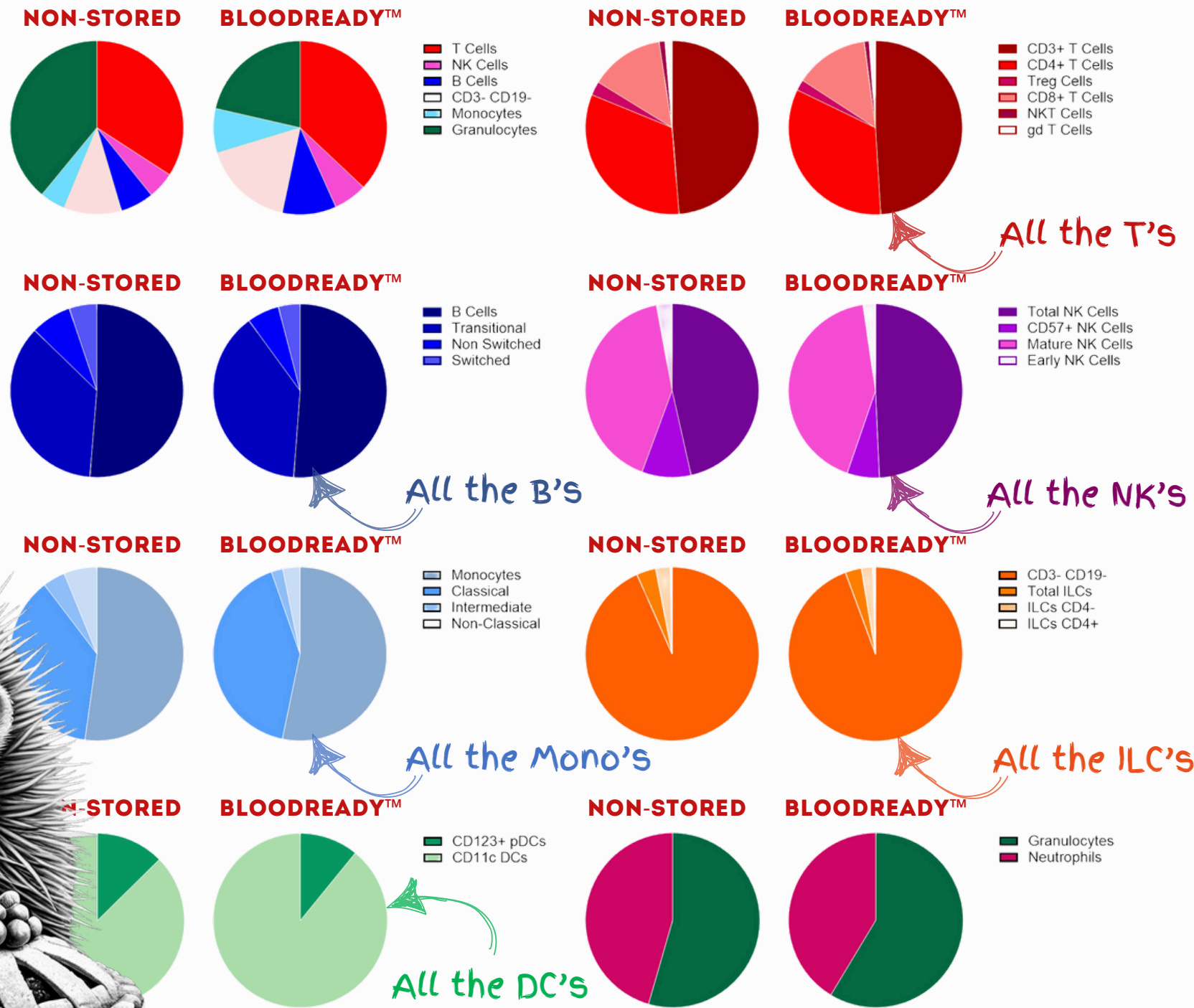
preserve granular characteristics of fresh whole blood

PLUS CELLS
REMAIN VIABLE &
FUNCTIONAL
POST-ISOLATION!

PRESERVE ALL MAJOR CELL POPULATIONS - LIVE!

PRESERVE EPITOPES BETTER THAN FIXATION!

Only loss is in
Granulocytes



Data generated by FCCF, Newcastle Uni. after 3-day storage of whole blood at 2-8°C.
Left: Multiplex immunophenotyping analysis; Right: 93 antibody panel screen

“75% epitopes preserved better than Cyto-Chex!”

BLOODREADY™

preserve granular characteristics of fresh whole blood

- EXTEND SHIPPING TIMES BY BEING ABLE TO STORE FOR 72 HOURS
- PRESERVE ALL MAJOR LEUKOCYTE POPULATIONS AND GRANULAR SUBPOPULATIONS.
- CONSERVE UNSTABLE SURFACE EPITOPE PRESENTATION BETTER THAN COMMON FIXATION METHODS (CYTO-CHEX®). *AKA Streck Tube!*
- ISOLATE CELLS WITH >90% VIABILITY USING STANDARD METHODS
- MAINTAIN CELL COMPETENCE AFTER RETURN TO 37°C.
- AVAILABLE IN MULTIPLE SIZES: 0.5ML - 10 ML

Great for flow cytometry!

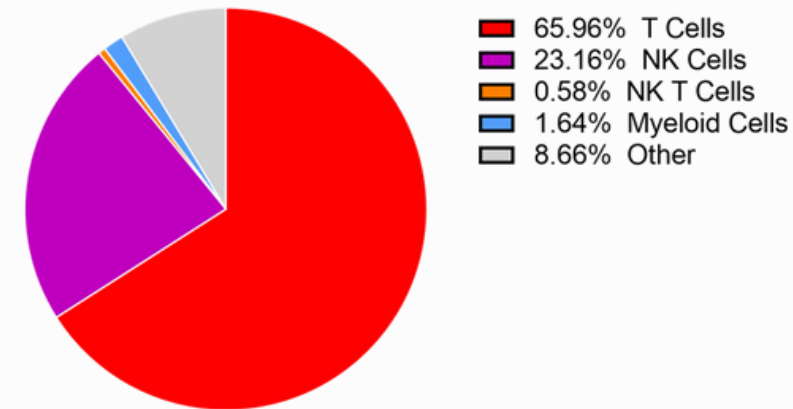


LEUKOSTOR™

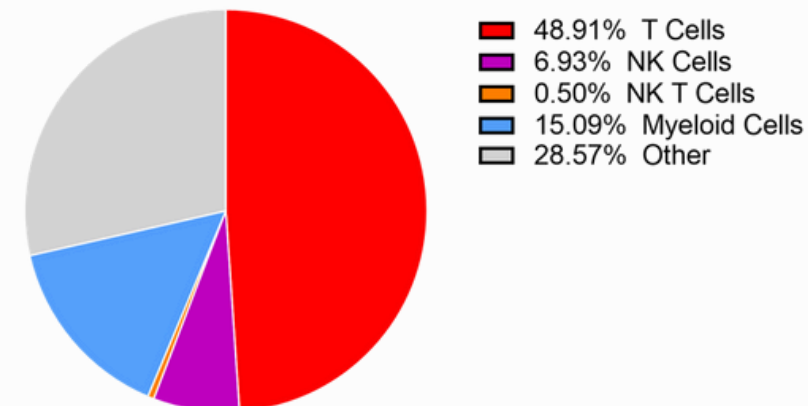
maintain fresh apheresis material

PRESERVE MAJOR CELL POPULATIONS - LIVE!

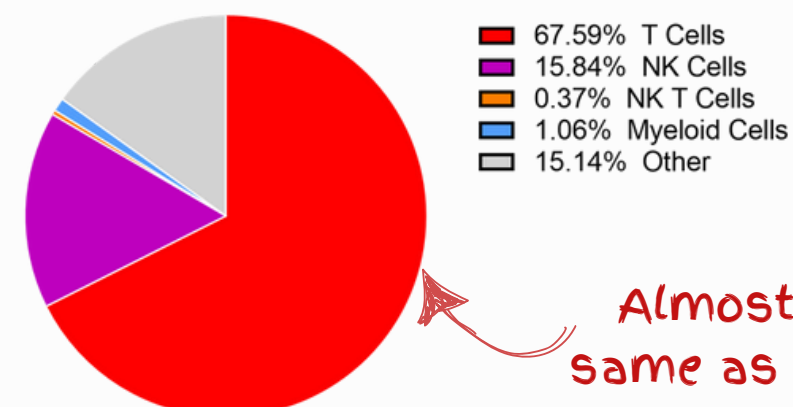
NON-STORED (DAY 0)



NO-GEL CTL. (DAY 5)



LEUKOSTOR™ (DAY 5)



Almost the same as fresh!

GREAT FOR HIGH
YIELDS OF
VIABLE
LYMPHOCYTES

INCREASE THE VIABILITY OF CELLS OF INTEREST

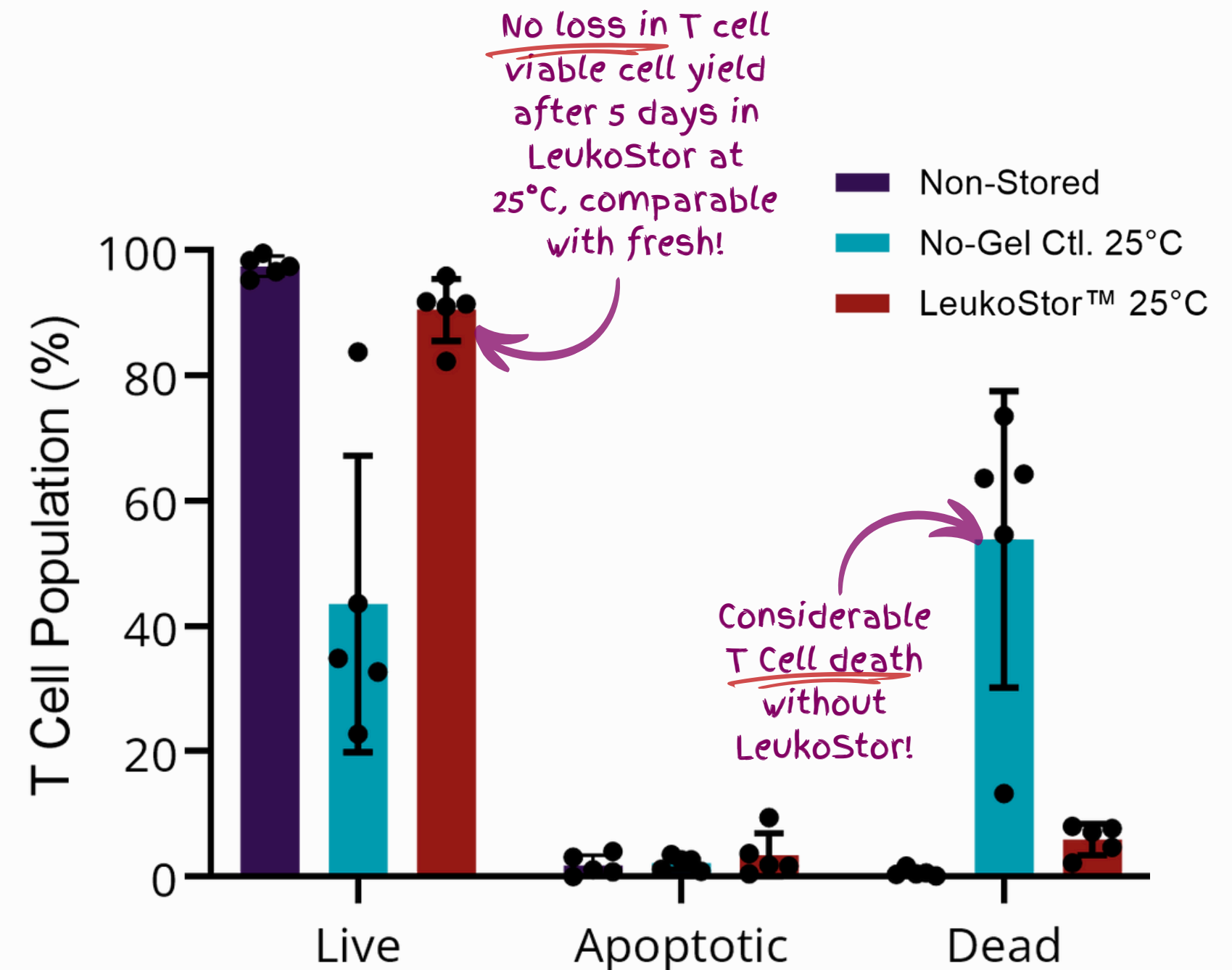
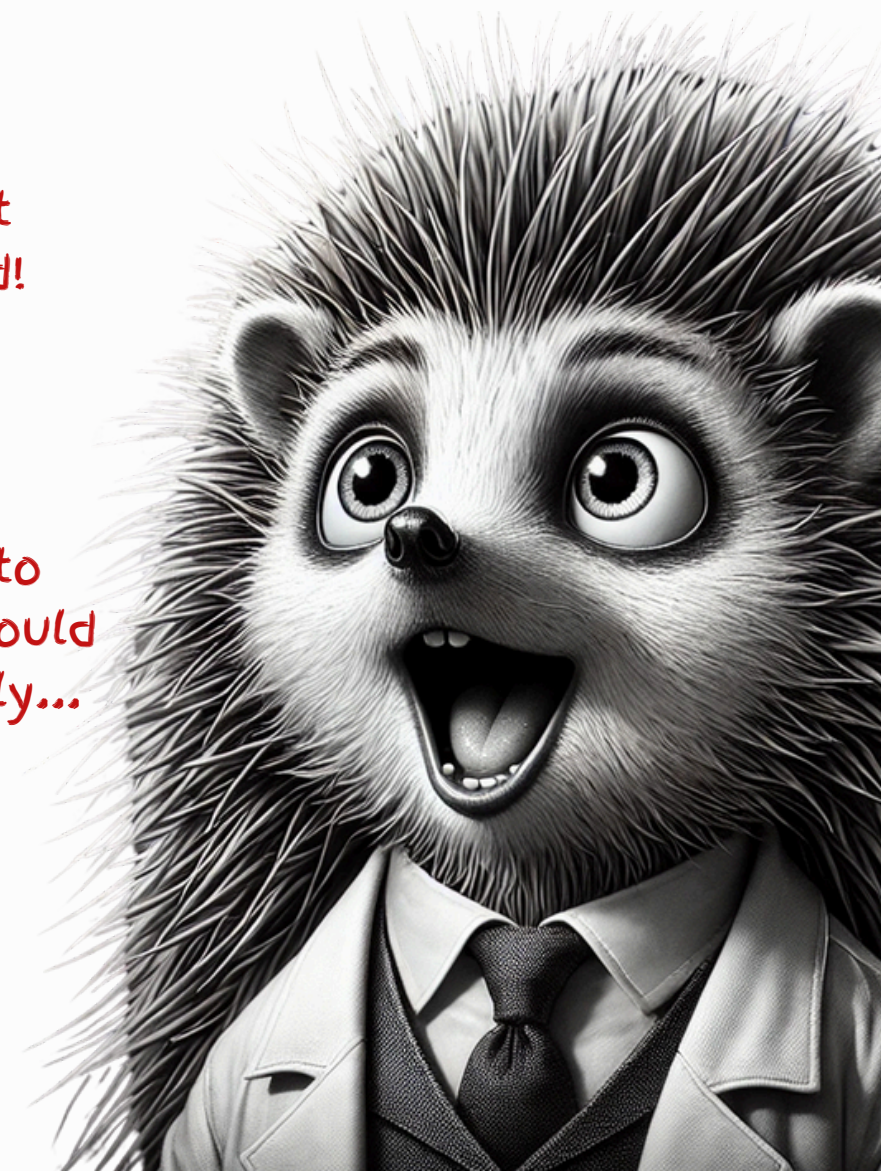


Figure obtained from LeukoStor White Paper showing fresh apheresis material stored for 5 days at room temperature.

LEUKOSTOR™

maintain fresh apheresis material

- **MAXIMISE VIABLE LYMPHOCYTE YIELD UP TO 2-FOLD AFTER 5 DAYS AT ROOM TEMPERATURE.**
- **REDUCE VARIABILITY IN YIELD FOR GREATER DOWNSTREAM PROCESS CONSISTENCY.**
- **MAXIMISE MONOCYTE YIELD 2-FOLD AFTER 5 DAYS WHEN STORED AT 2-8°C** *Yeah, a bit weird but they are happier cold!*
- **INCREASE THE GEOGRAPHICAL DISTRIBUTION OF FRESH LEUKAPHERESIS FROM DONOR CENTRES TO USERS.** *Ship fresh to regions you could not previously...*
- **AVAILABLE IN MULTIPLE SIZES: 10ML - 70ML (LARGER SIZES ON REQUEST)**





THATS ALL, FOLKS